

RESOLUTION NO. 2000- 4
RESOLUTION OF THE BOARD OF COUNTY
COMMISSIONERS OF ST. JOHNS COUNTY, FLORIDA
APPROVING A SUBDIVISION PLAT FOR
PLANTATION OAKS AT PONTE VEDRA UNIT ONE

WHEREAS, MHK of Volusia County, Inc., a Corporation under the laws of Florida, as Owner, has applied to the Board of County Commissioners of St. Johns County, Florida, for approval to record a subdivision plat known as Plantation Oaks at Ponte Vedra Unit One.

NOW, THEREFORE BE IT RESOLVED BY THE BOARD OF COUNTY COMMISSIONERS OF ST. JOHNS COUNTY, FLORIDA, as follows:

Section 1. The above-described subdivision plat and its dedicated areas depicted thereon are conditionally approved and accepted by the Board of County Commissioners of St. Johns County, Florida subject to Sections 2, 4, and 5.

Section 2. A Letter of Credit is on file with the Clerk of Court in the amount of \$1,296,808.60

Section 3. A Warranty Bond is not required.

Section 4. The approval and acceptance described in Section 1 shall not take effect until the Clerk has received a title opinion, certificate, or policy pertaining to the real property that is the subject of the aforementioned subdivision plat, and which opinion, certificate or policy is in a form acceptable to the County Attorney or Assistant County Attorney.

Section 5. The approval and acceptance described in Section 1 shall not take effect until the plat has been signed by each of the following departments, person or offices:

- a) Chairman or Vice-Chairman of the Board of County Commissioners of St. Johns County, Florida;

- b) Office of the County Attorney;
- c) County Planning and Zoning Department; and
- d) Clerk of Courts.
- e) Development Review Program

The Clerk shall not sign or accept the Plat for recording until it has been signed by each of the above persons or entities described in a) through c) and e) above. If the plat is not signed and accepted by the Clerk for recording within 14 days from the date hereof, then the above-described conditional approval shall automatically terminate. If the plat is signed by the Clerk on or before such time, the conditions described herein shall be deemed to have been met.

ADOPTED by the Board of County Commissioners of St. Johns County, Florida, this 11th day of January, 2000.

BOARD OF COUNTY COMMISSIONERS
OF ST. JOHNS COUNTY, FLORIDA

BY: James E. Bryant
James E. Bryant, Its Chair

ATTEST: Cheryl Strickland

Patricia A. Strickland

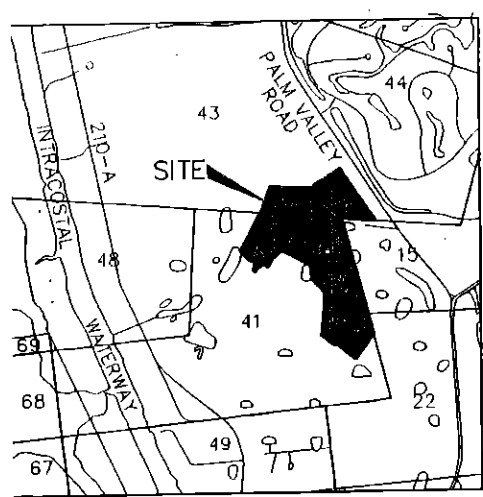
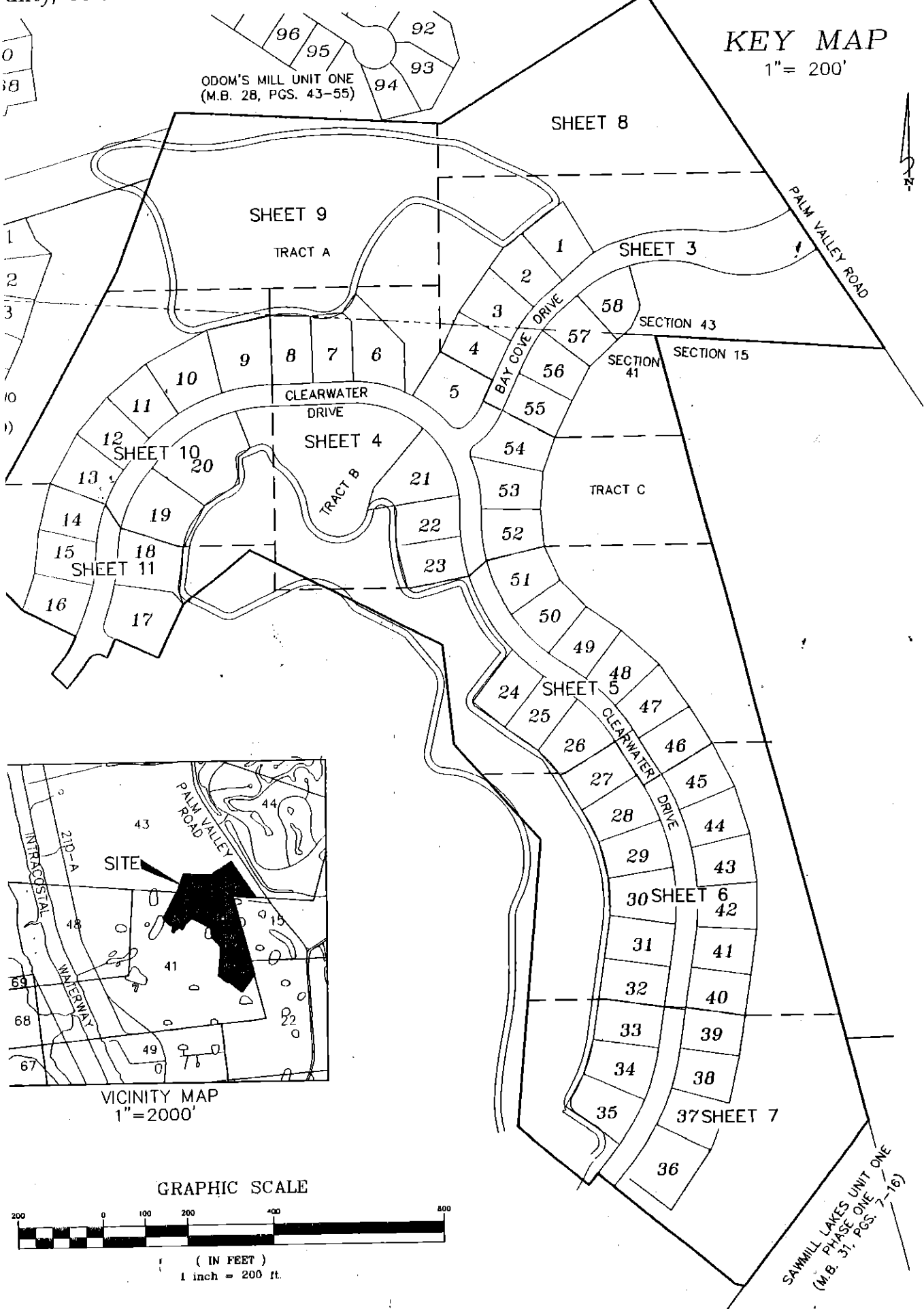
Deputy Clerk

KEY MAP

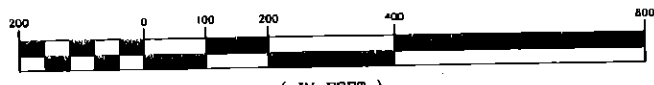
1" = 200'

ODOM'S MILL UNIT ONE
(M.B. 28, PGS. 43-55)

Plantation Oaks at Ponte Vedra Unit One



GRAPHIC SCALE



(IN FEET)
1 inch = 200 ft.

SAWMILL LAKES UNIT ONE
PHASE ONE
(M.B. 31, PGS. 7-16)